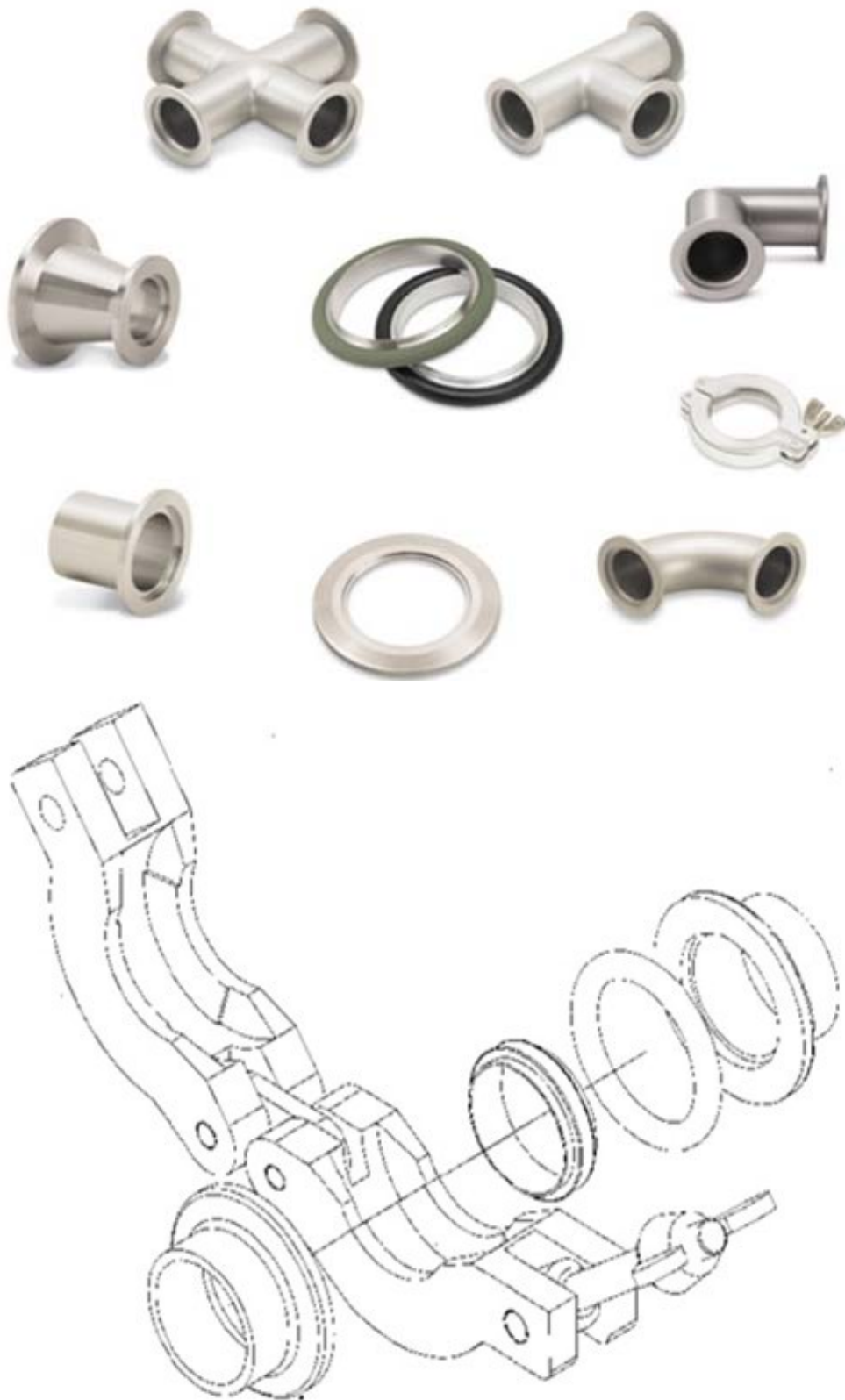


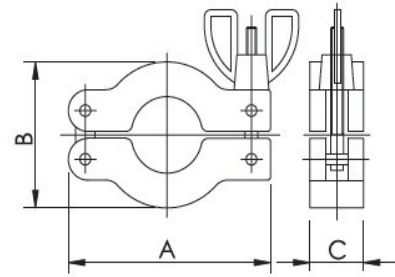
## 真空配件 - KF 系列

Vacuum Fittings-KF Series



我们的样本资料仅供客户参考。针对一些特定条件应用的测试条件获得的实验数据和结果,其有效性依赖于许多不可控的因素。因此用户有责任根据自己的特定需求仔细核实上述结果的有效性和产品的适用性。根据该目录中所列信息引起的争议将不予支持。技术参数如有更改,恕不另行通知。产品图片包含的某些附件可能不作为所印目录号的标准配件提供。如有疑问请来电咨询。

KF Clamps

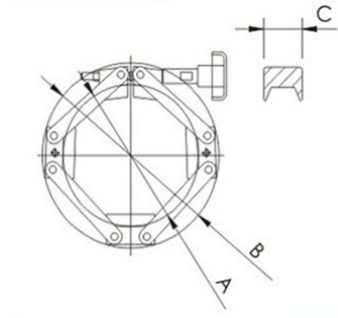


※Material: SUS304 or Aluminium

Unit:mm

Parts No.	A	B	C
CLP-10/16	62.30	41.00	16.50
CLP-25	72.40	54.00	16.50
CLP-40	64.30	69.00	16.50
CLP-50	65.30	90.00	21.50

NW Clamp Chain

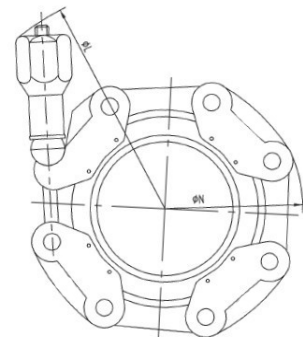


※Material: SUS304 or Aluminium

Unit:mm

Parts No.	A	B	C
CLP-80	100.00	165.00	37.00
CLP-100	122.00	185.00	37.00
CLP-160	178.00	228.00	37.00
CLP-200	239.00	300.00	37.00
CLP-250	288.00	350.00	37.00

KF Clamp Chain

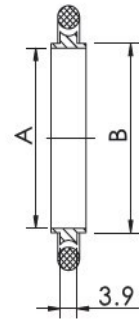


※Material: SUS304 or Aluminium

Unit:mm

Parts No.	L	N	No. of Links
CLP-10/16(KF)	115.00	60.00	3
CLP-20/25(KF)	125.00	70.00	3
CLP-32/40(KF)	135.00	85.00	4
CLP-50(KF)	152.00	105.00	5
CLP-63(KF)	160.00	120.00	6

KF Centering Ring with O-Ring

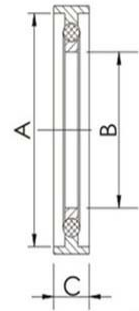


※Material: SUS304 or SUS316L + Viton

Unit:mm

Parts No.	A	B
COP-10B	10.00	12.00
COP-16B	16.00	17.00
COP-25B	25.00	26.00
COP-40B	40.00	41.00
COP-50B	50.00	52.00
COP-80B	80.00	82.50
COP-100B	98.80	101.50
COP-160B	150.00	152.60

KF Centering Ring with Outer Ring

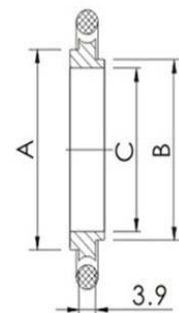


※Material: SUS304 or SUS316L + Viton +SUS304

Unit:mm

Parts No.	A	B	C
AUT-16J	30.00	16.00	7.00
AUT-25J	40.00	25.00	7.00
AUT-40J	55.00	40.00	7.00
AUT-50J	75.00	50.00	7.00
AUT-63J	87.00	68.00	7.00
AUT-80J	114.00	80.00	7.00
AUT-100J	134.00	98.80	7.00
AUT-160J	190.00	150.00	7.00

KF Adaptive Centering Ring with O-Ring

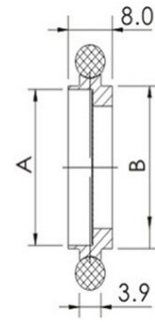


※Material: SUS304 or SUS316L + Viton

Unit:mm

Parts No.	A	B	C
COP-10/16-BJ	17.00	12.00	10.00
COP-20/25-BJ	26.00	22.00	20.00
COP-32/40-BJ	41.00	34.00	32.00

KF Screend Centering Ring with O-Ring

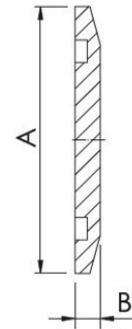
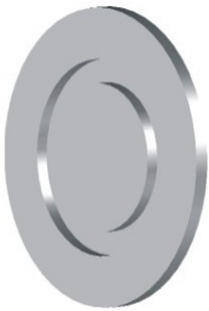


※Material: SUS304 or SUS316L + Viton

Unit:mm

Parts No.	A	B
COP-10-LV	10.00	12.00
COP-16-LV	16.00	17.00
COP-25-LV	25.00	26.00
COP-40-LV	40.00	41.00
COP-50-LV	50.00	52.00

KF Blank Flanges



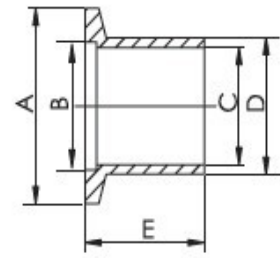
※Material: SUS304 or SUS316L

Unit:mm

Parts No.	A	B
BFP-10	30.00	5.10
BFP-25	40.00	5.10
BFP-40	55.00	5.10
BFP-50	75.00	5.10
BFP-63	87.00	5.10
BFP-80	114.00	11.00
BFP-100	134.00	11.00
BFP-160	190.00	11.00



KF Weld Stub Flanges



※Material: SUS304 or SUS316L

※Remark: "-CX" 表示承插焊法兰

KF Weld Stub Flanges,Short

Unit:mm

Parts No.	A	B	C	D	E
CFP-10S	30.00	12.20	10.60	13.80	20.00
CFP-16S	30.00	17.20	16.00	20.00	20.00
CFP-25S	40.00	26.20	24.00	27.20	20.00
CFP-40S	55.00	41.20	39.00	42.70	20.00
CFP-50S	75.00	52.20	55.00	60.50	20.00
CFP-63S	87.00	70.00	70.20	76.30	20.00
CFP-80S-CX	114.00	83.00	89.70	98.00	25.00
CFP-100S-CX	134.00	102.00	114.90	118.00	25.00
CFP-160S-CX	190.00	153.00	166.30	174.00	20.00

KF Weld Stub Flanges,Half

Unit:mm

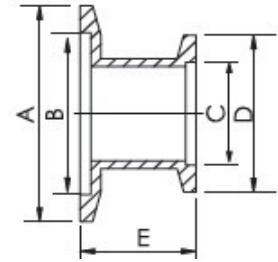
Parts No.	A	B	C	D	E
CFP-10H	30.00	12.20	10.60	13.80	30.00
CFP-16H	30.00	17.20	16.00	20.00	30.00
CFP-25H	40.00	26.20	24.00	17.20	30.00
CFP-40H-CX	55.00	41.20	39.00	42.70	30.00
CFP-50H	75.00	52.20	55.00	60.50	30.00
CFP-63H	87.00	70.00	70.20	76.30	30.00
CFP-80H	114.00	83.00	89.70	98.00	30.00
CFP-100H	134.00	102.00	110.10	114.30	30.00
CFP-160H	190.00	153.00	159.60	165.20	30.00

KF Weld Stub Flanges,Long

Unit:mm

Parts No.	A	B	C	D	E
CFP-10L	30.00	12.20	10.60	13.80	50.00
CFP-16L	30.00	17.20	16.00	20.00	50.00
CFP-25L	40.00	26.20	24.00	17.20	50.00
CFP-40L	55.00	41.20	39.00	42.70	50.00
CFP-50L	75.00	52.20	55.00	60.50	50.00
CFP-63L	87.00	70.00	70.20	76.30	50.00
CFP-80L	114.00	83.00	89.70	98.00	50.00
CFP-100L	134.00	102.00	110.10	114.30	50.00

KF Straight Reducers

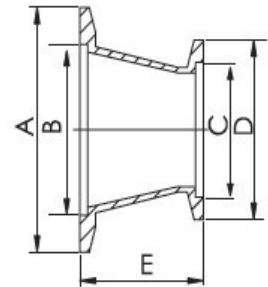


※Material: SUS304 or SUS316L

Unit:mm

Parts No.	A	B	C	D	E
RP-1625	40.00	26.20	17.20	30.00	35.00
RP-1640	55.00	41.20	17.20	30.00	35.00
RP-1650	75.00	52.20	17.20	30.00	35.00
RP-2540	55.00	41.20	26.20	40.00	35.00
RP-2550	75.00	52.20	26.20	40.00	35.00
RP-4050	75.00	70.00	41.20	55.00	35.00
RP-5080	114.00	83.00	52.20	75.00	55.00
RP-50100	134.00	102.00	52.20	75.00	55.00
RP-80100	134.00	153.00	83.00	114.00	55.00

KF Conical Reducer



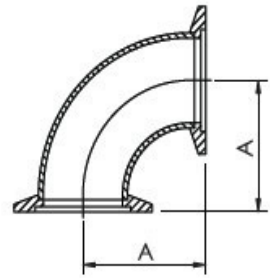
※Material: SUS304 or SUS316L

Unit:mm

Parts No.	A	B	C	D	E
RP-1625(FT)	40.00	26.20	17.20	30.00	39.90
RP-1640(FT)	55.00	41.20	17.20	30.00	39.90
RP-2540(FT)	55.00	41.20	26.20	40.00	39.90
RP-1650(FT)	75.00	52.20	17.20	30.00	39.90
RP-2550(FT)	75.00	52.20	26.20	40.00	39.90
RP-4050(FT)	75.00	52.20	41.20	55.00	39.90



KF 90°Elbows

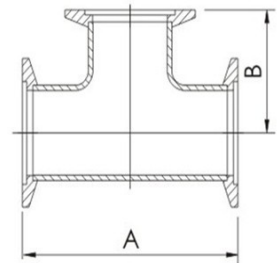


※Material: SUS304 or SUS316L

Unit:mm

Parts No.	A
LP-16	50.10
LP-25	50.10
LP-40	65.00
LP-50	75.00
LP-80	134.30
LP-100	172.40

KF Equal Tees

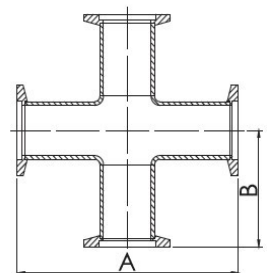


※Material: SUS304 or SUS316L

Unit:mm

Parts No.	A	B
TP-16	79.80	39.90
TP-25	97.20	48.60
TP-40	130.00	65.00
TP-50	160.00	80.00
TP-80	211.40	105.70
TP-100	249.60	124.80

KF Equal Corsses



※Material: SUS304 or SUS316L

Unit:mm

Parts No.	A	B
XP-16	79.80	39.90
XP-25	97.20	48.60
XP-40	130.00	65.00
XP-50	160.00	80.00
XP-80	220.00	110.00
XP-100	240.00	120.00